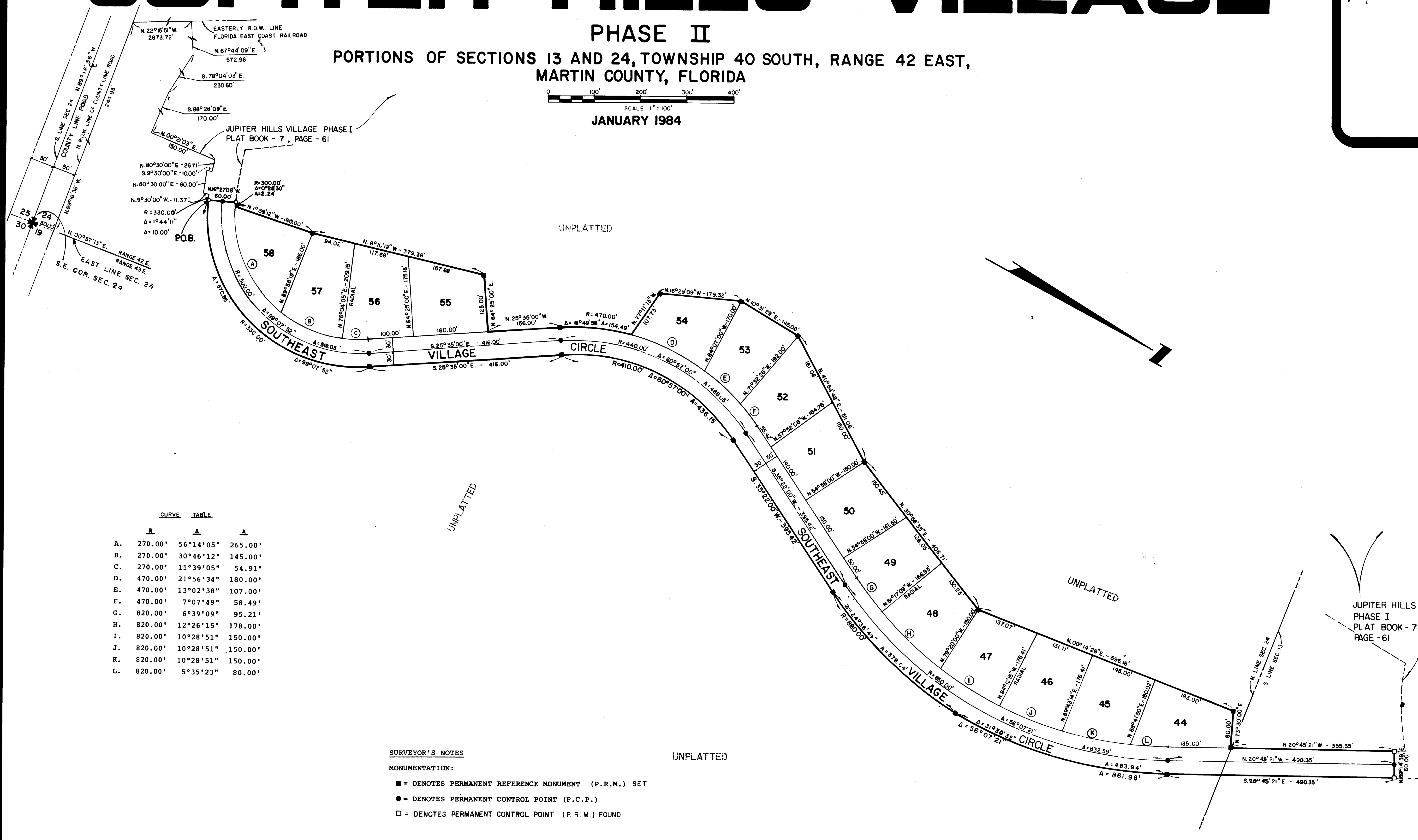
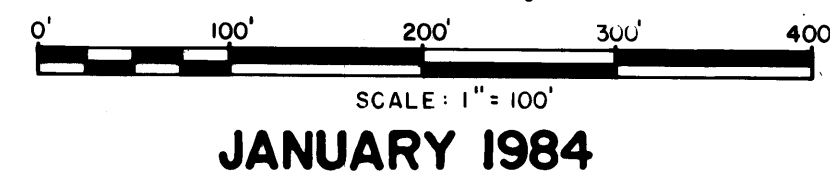


# A PLAT OF JUPITER HILLS VILLAGE

PL 89  
Pg 68

## PHASE II

PORTIONS OF SECTIONS 13 AND 24, TOWNSHIP 40 SOUTH, RANGE 42 EAST,  
MARTIN COUNTY, FLORIDA



CURVE	R	A	A
A.	270.00'	56°14'05"	265.00'
B.	270.00'	30°46'12"	145.00'
C.	270.00'	11°39'05"	54.91'
D.	470.00'	21°56'34"	180.00'
E.	470.00'	13°02'38"	107.00'
F.	470.00'	7°07'49"	58.49'
G.	820.00'	6°39'09"	95.21'
H.	820.00'	12°26'15"	178.00'
I.	820.00'	10°28'51"	150.00'
J.	820.00'	10°28'51"	150.00'
K.	820.00'	10°28'51"	150.00'
L.	820.00'	5°35'23"	80.00'

**SURVEYOR'S NOTES**

MONUMENTATION:

- = DENOTES PERMANENT REFERENCE MONUMENT (P.R.M.) SET
- = DENOTES PERMANENT CONTROL POINT (P.C.P.)
- = DENOTES PERMANENT CONTROL POINT (P.R.M.) FOUND

**BEARING BASE**

THE BEARING BASE FOR THE PLAT OF JUPITER HILLS VILLAGE IS ASSUMED, WITH THE EAST LINE OF SECTION 24, TOWNSHIP 40 SOUTH, RANGE 42 EAST BEING N 00° 57' 13" E.

JUPITER HILLS VILLAGE  
PHASE I  
PLAT BOOK - 7  
PAGE - 61

LINDAHL, BROWNING, FERRARI & HELLSTROM, INC.  
CONSULTING ENGINEERS, PLANNERS & SURVEYORS

P.O. BOX 727  
JUPITER, FLORIDA 33458

91 COLORADO AVENUE  
STUART, FLORIDA 33494

117 SOUTH SECOND STREET  
FORT PIERCE, FLORIDA 33450

2 2  
SHEET OF SHEETS